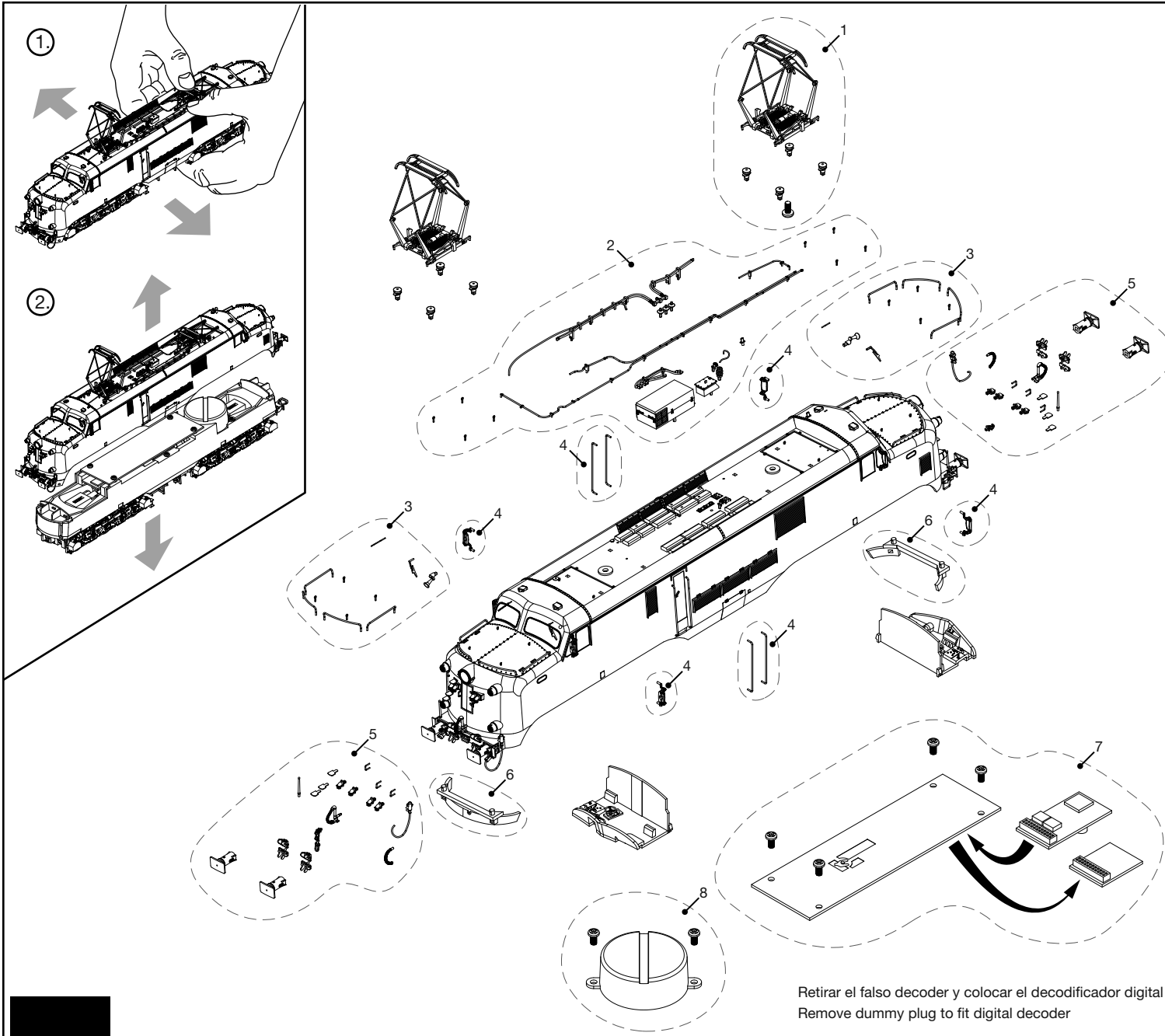


LISTA DE RECAMBIOS / LIST OF SPARES

| Nº Artículo Item No | Descripción Description | Ref. repuesto Spare part ref. |
|------------------------|--|----------------------------------|
| 1 | Set pantógrafo Pantograph set | ER2757/01 |
| 2 | Accesorios techo Roof accessories | ER2757/02 |
| 3 | Accesorios cabina Cabin accessories | ER2763/03 |
| 4 | Pasamanos y espejos Handrails and mirrors | ER2757/04 |
| 5 | Topes, enganches, mangueras y accesorios frontales Buffers, couplers, hoses and front accessories | ER2763/05 |
| 6 | Set de faldones Front skirts | ER2757/06 |
| 7 | Circuito impreso principal Main PCB | ER2757/07 |
| 8 | Caja resonancia Speaker box | ER2757/08 |



Retirar el falso decoder y colocar el decodificador digital
Remove dummy plug to fit digital decoder

HORNBY HOBBIES

www.hornbyinternational.com

HORNBY HOBBIES LTD
3rd Floor, The Gateway,
Innovation Way, Discovery Park,
Sandwich, CT13 9FF
United Kingdom

HORNBY ESPAÑA S.A.
Federico Chueca, s/n
28806 Alcalá de Henares
Madrid, España

HORNBY ITALIA S.r.l.
via Ferri, 14/16
25010 Borgosatollo
Brescia, Italia

HORNBY FRANCE SAS,
Parc d'activités de Gomberville,
78114 Magny les Hameaux
France

HORNBY DEUTSCHLAND GmbH,
Oeslauer Str. 36
96472 Rödentel
Deutschland

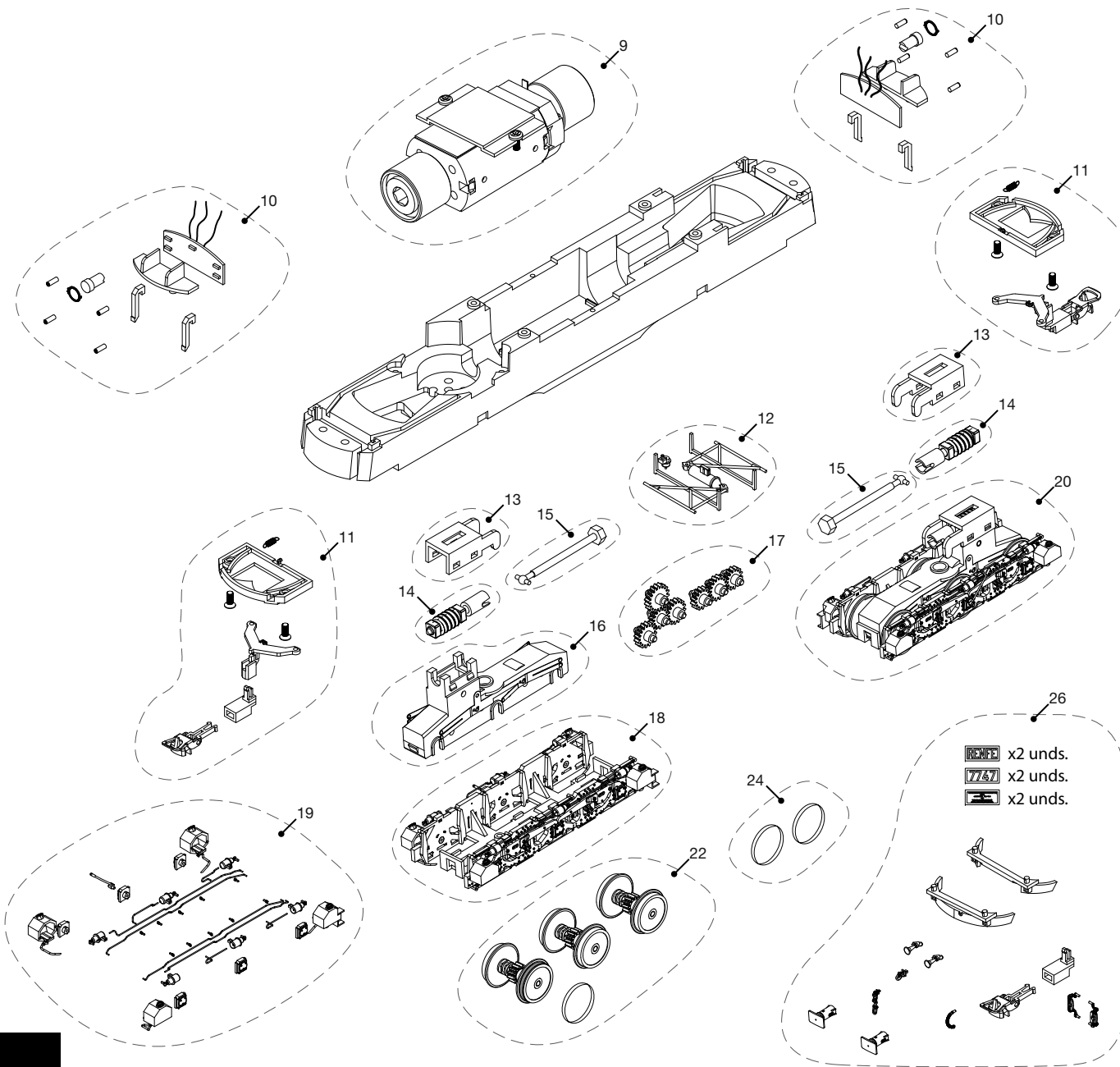
HORNBY AMERICA INC
3900-C2 Industry Drive
East, FIFE, WA 98424
USA

CE 12V 14+

Issued January 2016 **Service Sheet ELBS-359**

LISTA DE RECAMBIOS / LIST OF SPARES

| Nº Artículo Item No | Descripción Description | Ref. repuesto Spare part ref. |
|------------------------|---|----------------------------------|
| 9 | Motor Motor | ER2757/09 |
| 10 | Set iluminación Light PCBs + light pipes | ER2757/10 |
| 11 | Set de enganche Coupler set | ER2757/11 |
| 12 | Accesorios chasis Chassis accessories | ER2757/12 |
| 13 | Tapa del sinfín (x2) Worm gear cover (x2) | ER2757/13 |
| 14 | Sinfín (x2) Worm gears + cardan joints (x2) | ER2757/14 |
| 15 | Cardan (x2) Cardan shafts (x2) | ER2757/15 |
| 16 | Caja de engranajes incl. toma de corriente Gear box incl. pick-ups | ER2757/16 |
| 17 | Set de engranajes y ejes Gears and axles set | ER2757/17 |
| 18 | Coertura bogie Bogie cover | ER2763/18 |
| 19 | Accesorios bogie Bogie accessories | ER2763/19 |
| 20 | Bogie completo DC DC complete bogie | ER2763/20 |
| 22 | Set de ruedas DC DC wheel sets | ER2757/22 |
| 24 | Aros de adherencia Traction tyres | ER2757/24 |
| 26 | Bolsa de accesorios Accessory bag | ER2763/26 |



**HORNBY
HOBBIES**

www.hornbyinternational.com

HORNBY HOBBIES LTD
3rd Floor, The Gateway,
Innovation Way, Discovery Park,
Sandwich, CT13 9FF
United Kingdom

HORNBY ESPAÑA S.A.
Federico Chueca, s/n
28806 Alcalá de Henares
Madrid, España

HORNBY ITALIA S.r.l.
via Ferri, 14/16
25010 Borgosatollo
Brescia, Italia

HORNBY FRANCE SAS.
Parc d'activités de Gomberville,
78114 Magny les Hameaux
France

HORNBY DEUTSCHLAND GmbH.
Oeslauer Str. 36
96472 Rödentel
Deutschland

HORNBY AMERICA INC
3900-C2 Industry Drive
East, FIFE, WA 98424
USA

CE 12V 14+

Issued January 2016 **Service Sheet ELBS-359**